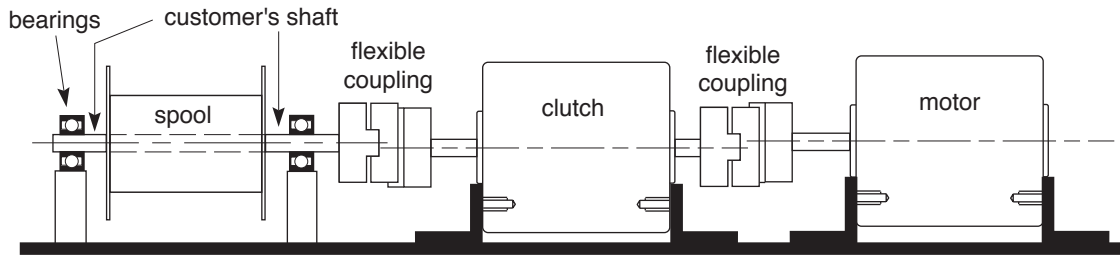


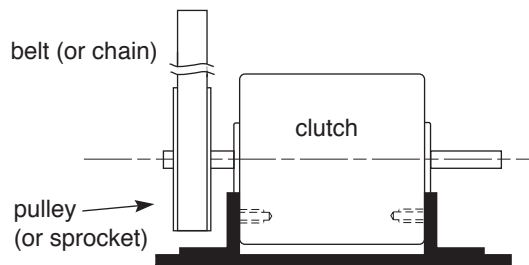
# Mechanical Installation Requirements for Clutches

When a clutch is foot mounted, and connected to a fully supported shaft, a flexible coupling must be used. Since perfect shaft alignment is impossible, flexible couplings are needed to protect the bearings from destructive side loads.



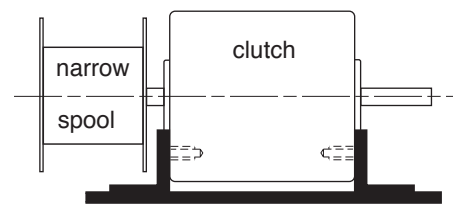
**Both shafts fully supported by bearings** - The clutch shafts are supported by bearings. The customer's shaft (for the spool, or gearbox, motor, or any device) is also fully supported by bearings. Even with precise alignments, a flexible coupling is required. If a rigid coupling is used, the shafts are forced into alignment by bending the shafts, resulting in bearing overload, and premature failure.

## A flexible coupling is not needed when:

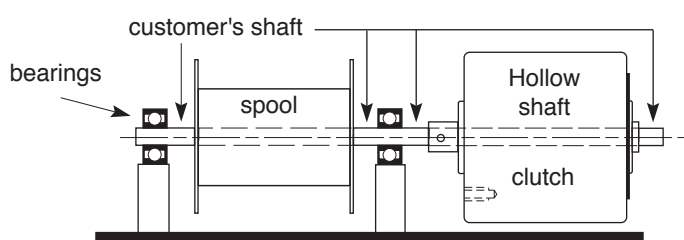


### Belt, chain drive, or gears:

The belt or chain flexes for misalignments. Gear play accommodates misalignments. A bracket rigidly locates the clutch.

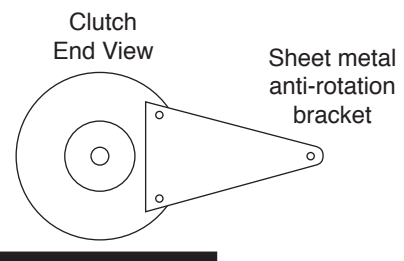


### The clutch supports the spool (or other floating device)



**Floating hollow-shaft clutch** - The customer's shaft for the spool (or other device) supports the clutch. The sheet metal anti-rotation bracket prevents the clutch body from rotating, yet flexes for misalignments.

**Do not rigidly mount the clutch body.**



Placid Industries, Inc.

139 Mill Pond Drive, Lake Placid, NY 12946 USA

[www.placidindustries.com](http://www.placidindustries.com)

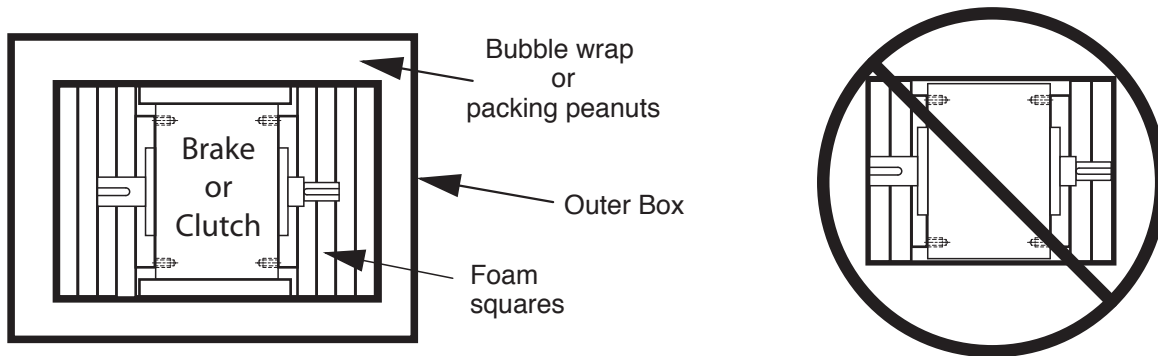
Phone 518 523-2422

Fax 518 523-2746

# Brake & Clutch Installation Instructions

---

## PACKING FOR SHIPPING - Protect from impact



---

## CARE & HANDLING

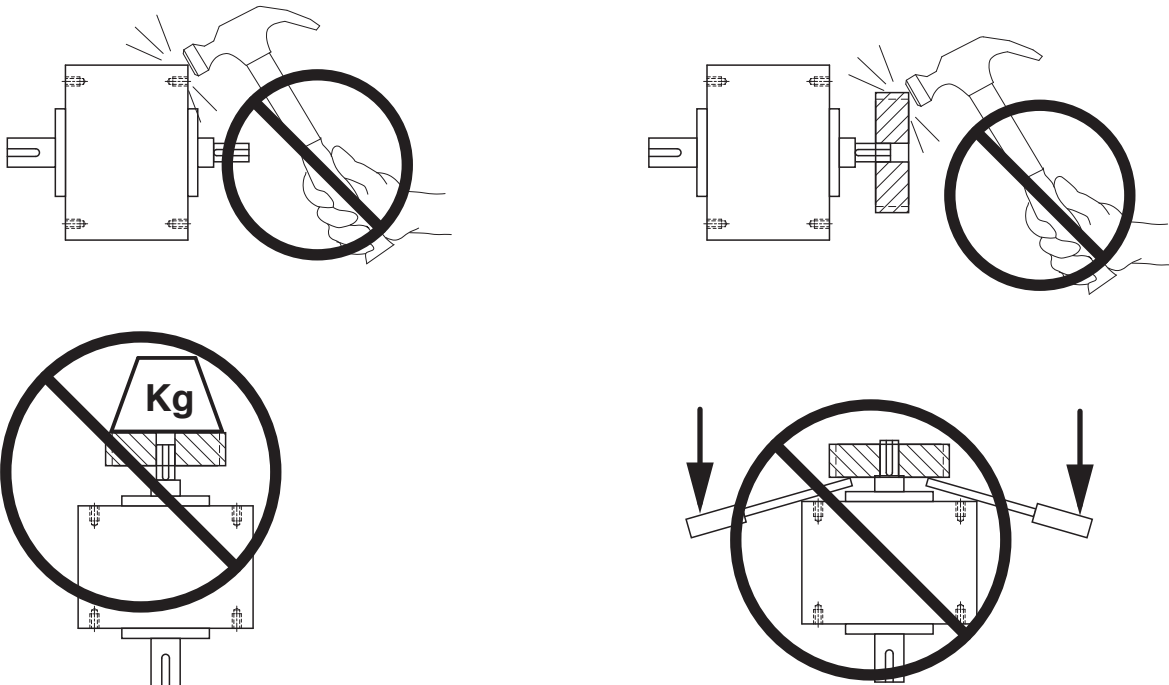
Do not drop, or strike with a hammer. Keep away from metal filings & fine metal chips. Shield from liquids.

Do not attempt to disassemble or remove the shafts.

The shafts must fit your gear, pulley, or couplings as SLIDE fits.

---

## INSTALLATION



Do not force your pulley onto the shaft.

Use a gear puller to remove a stuck item. Do not pry.

---

## MAINTENANCE

The brakes & clutches never need adjustments or maintenance. Do not attempt to disassemble.



Placid Industries, Inc.

139 Mill Pond Drive, Lake Placid, NY 12946 USA

[www.placidindustries.com](http://www.placidindustries.com)

Phone 518 523-2422

Fax 518 523-2746